



IT INDICE

1. FERRAMENTA	1
2. INSTALLAZIONE	2

GB CONTENTS

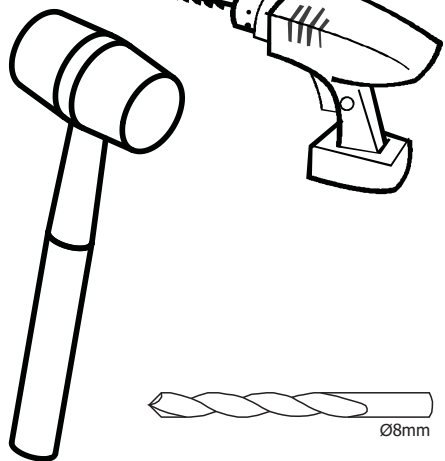
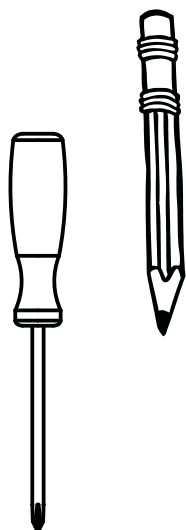
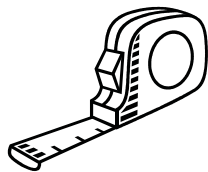
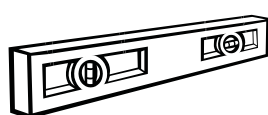
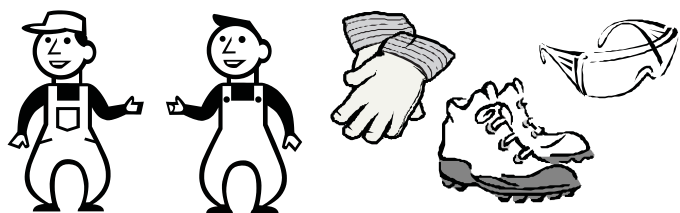
1. HARDWARE KIT	1
2. INSTALLATION	2

D INHALTSVERZEICHNIS

1. EISENWAREN-KIT	1
2. MONTAGE	2

F INDEX

1. QUINCAILLERIE	1
2. INSTALLATION	2



IT ATTENZIONE:

- Verificare la condizione del supporto prima di installare la specchiera e di scegliere viti adeguate al supporto esistente.



GB ATTENTION:

- Check the support condition before proceeding with the installation of the mirror; also choose adequate screw for the existing support.



D ACHTUNG:

- Vor der installation des spiegels den zustand des halters prüfen; wählen sie angemessene schrauben für bestehenden halter aus.



F ATTENZIONE:

- Vérifier les conditions du support avant d'installer le miroir et choisir les vis adéquates au support existant.

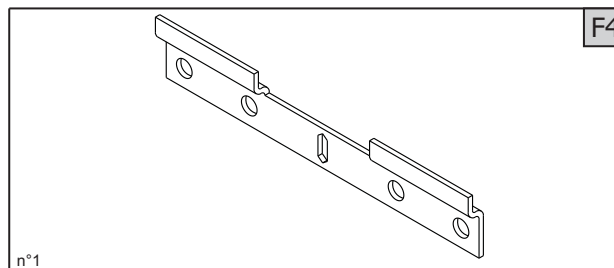
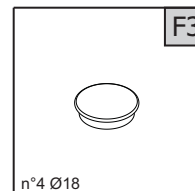
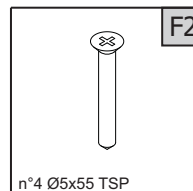
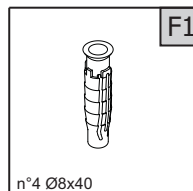


IT FERRAMENTA

GB HARDWARE KIT

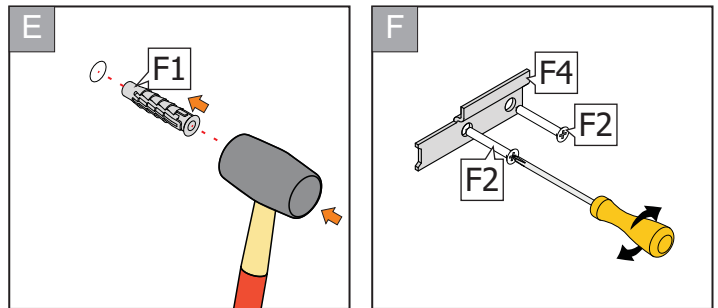
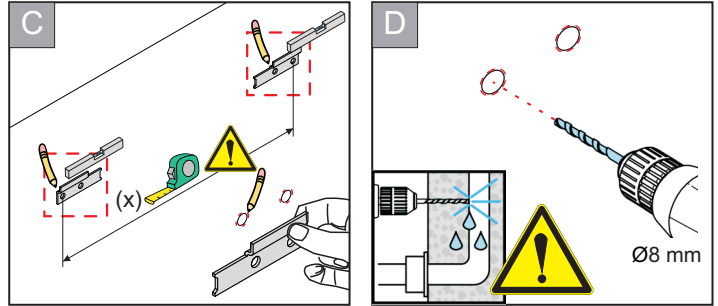
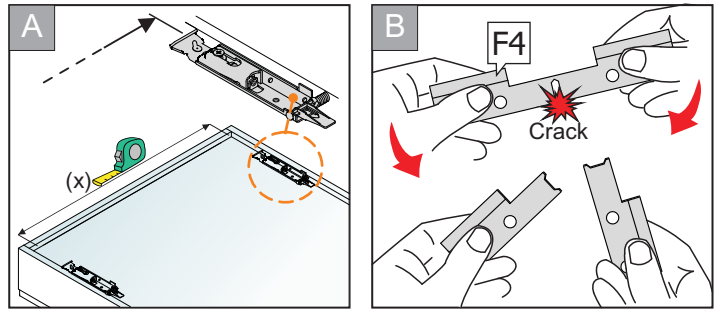
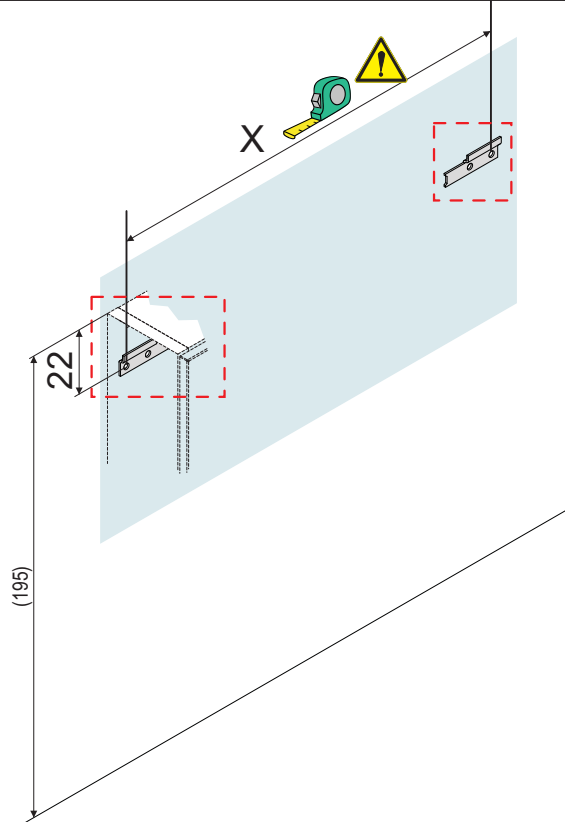
D EISENWAREN-KIT

F QUINCAILLERIE



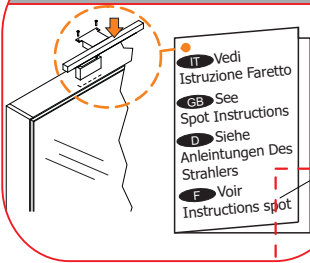
01

- IT Le misure sono espresse in cm. Tra parentesi le quote consigliate
- GB All measurements are in centimetres. In brackets the suggested measures.
- D Abmessungen in Zentimetern (cm). In Klammern die empfohlene vermessungen.
- F Les mesures sont en cm. Entre parenthèses les cotes conseillées.

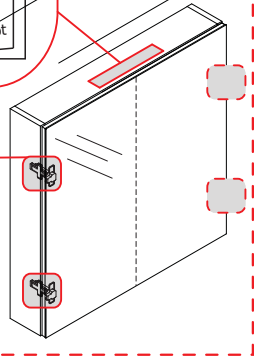


02

OPTIONAL

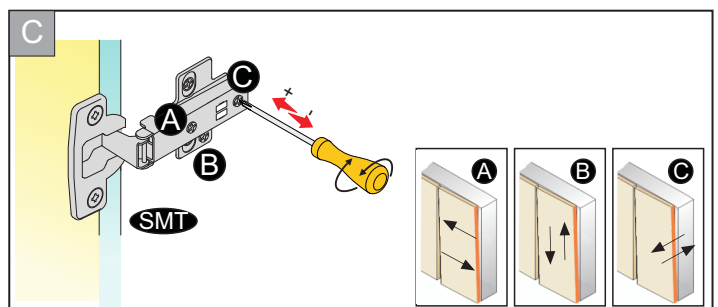
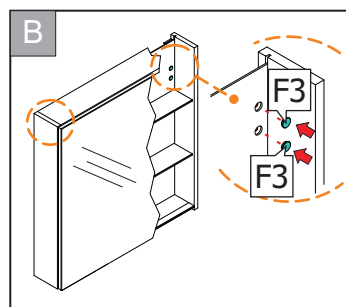
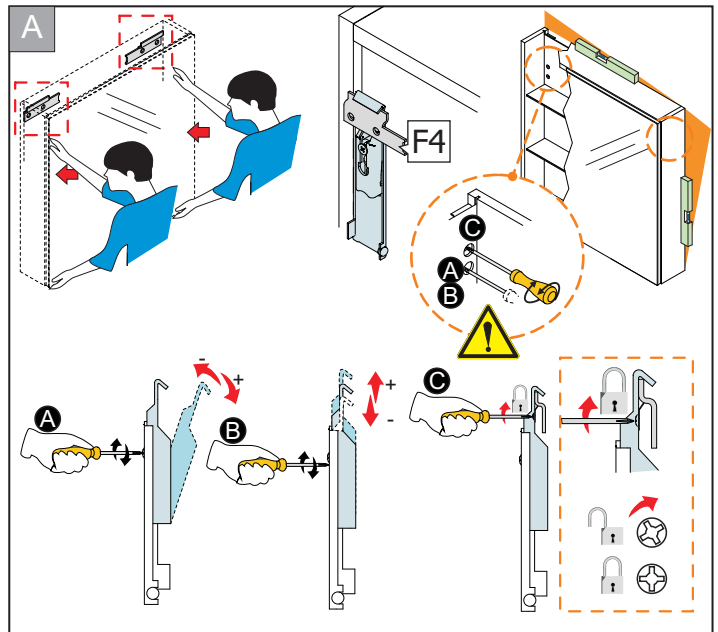
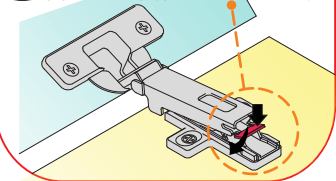


- IT Vedi Istruzione Faretto
- GB See Spot Instructions
- D Siehe Anleitungen Des Strahlers
- F Voir Instructions spot



SYSTEM

- IT SISTEMA DI SGANCIO RAPIDO DELLA CERNIERA
- GB QUICK-RELEASE HINGE SYSTEM
- D QUICK-RELEASE-SCHARNIER-SYSTEM
- F SYSTÈME DE DÉCROCHEMENT RAPIDÉ DE LA PORTE



IT Fine GB End D Ende F Fin