



IT INDICE

1. FERRAMENTA 1
 2. INSTALLAZIONE 2

EN CONTENTS





1. HARDWARE KIT 1
 2. INSTALLATION 2

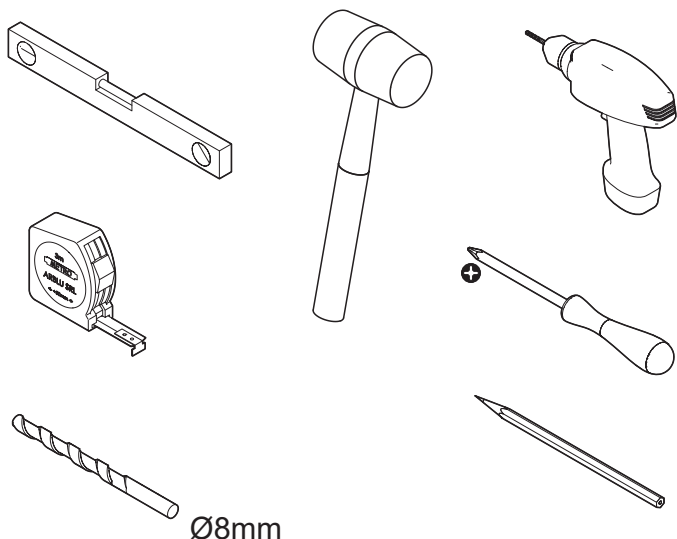
DE INHALTSVERZEICHNIS

1. EISENWAREN-KIT 1
 2. MONTAGE 2

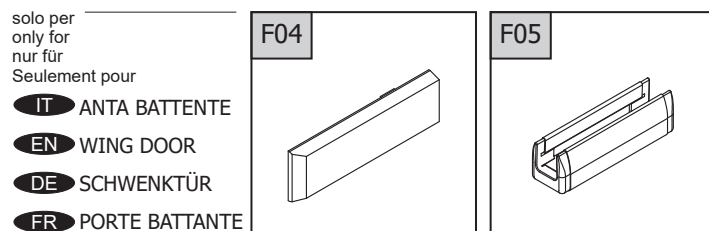
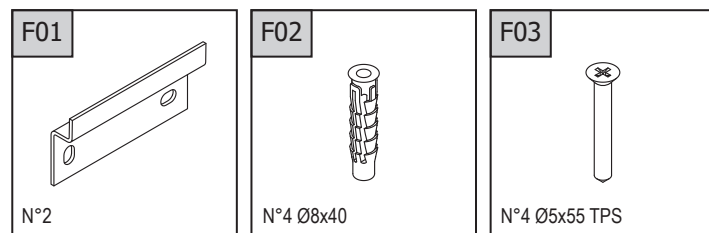
FR INDEX

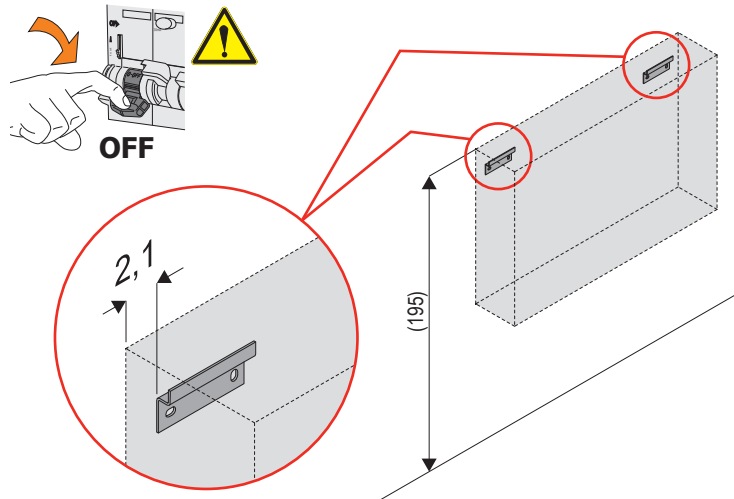
1. QUINCAILLERIE 1
 2. INSTALLATION 2

- IT** ATTENZIONE:
 Verificare la condizione del supporto prima di installare la specchiera e scegliere viti adeguate al supporto esistente. 
- EN** ATTENTION:
 Check the support condition before proceeding with the installation of the mirror; also choose adequate screw for the existing support. 
- DE** ACHTUNG:
 Vor der installation des spiegels den zustand des halters prüfen; wählen sie angemessene schrauben für bestehenden halter aus. 
- FR** ATTENTION:
 Vérifier les conditions du support avant d'installer le miroir et choisir les vis adéquates au support existant. 

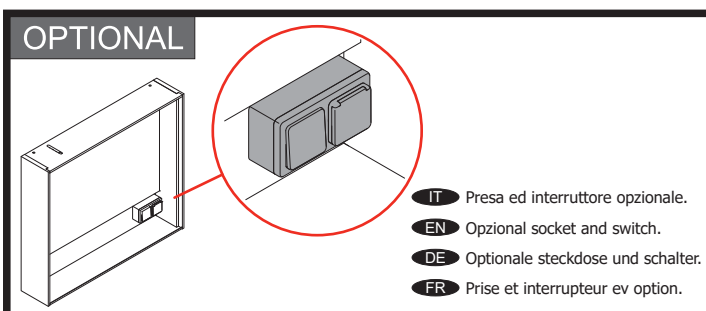
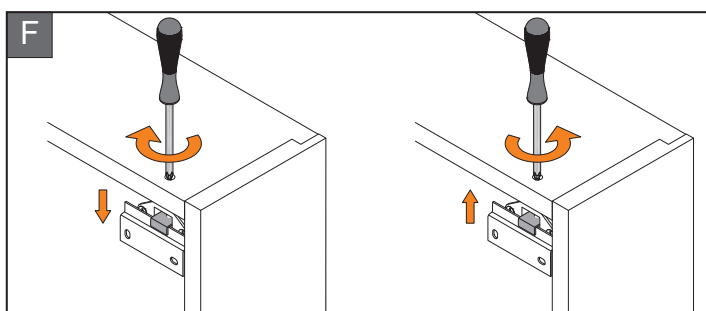
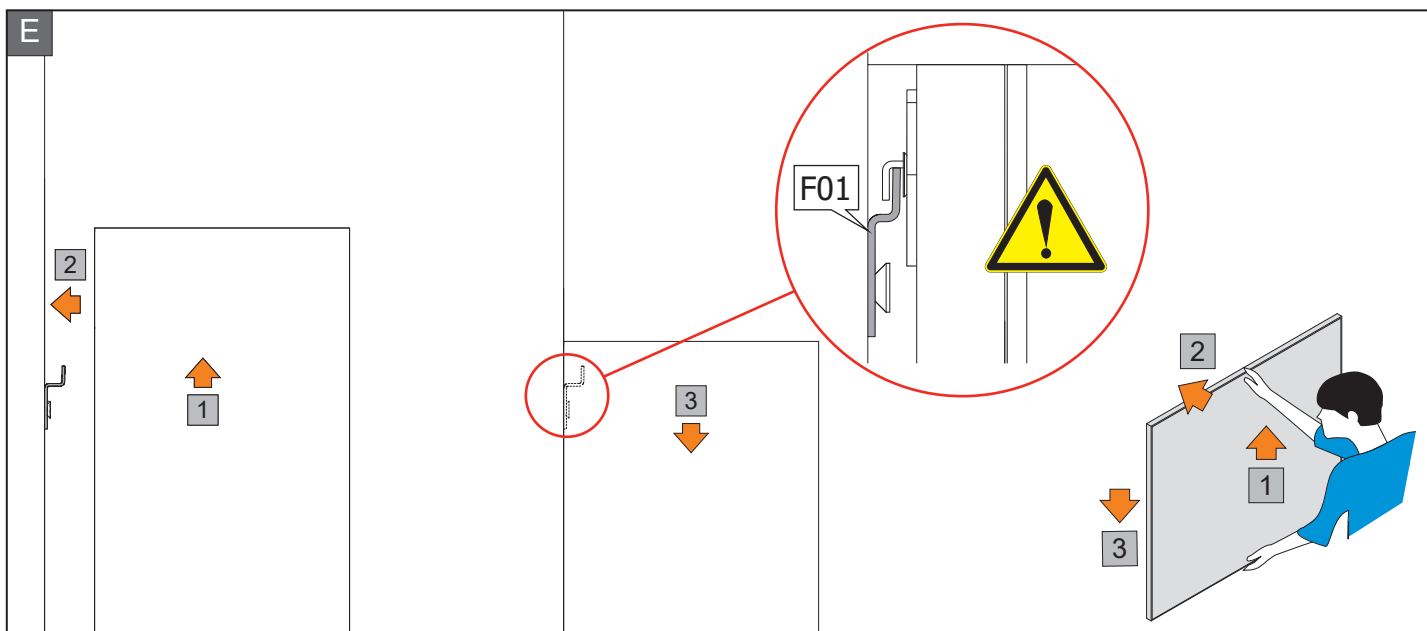
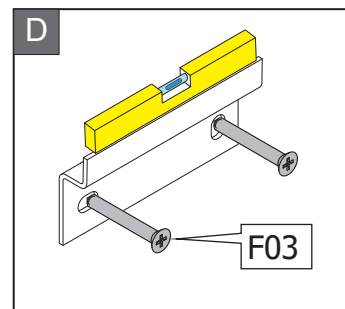
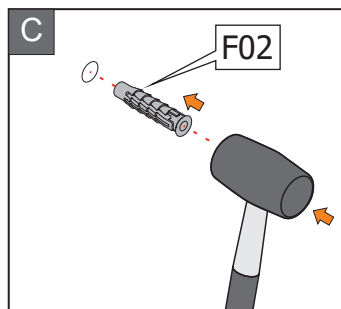
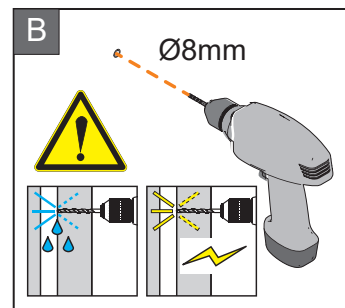
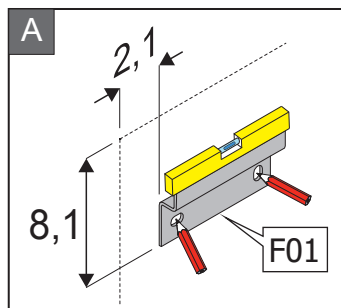


IT FERRAMENTA **EN HARDWARE KIT**
DE EISENWAREN-KIT **FR QUINCAILLERIE**

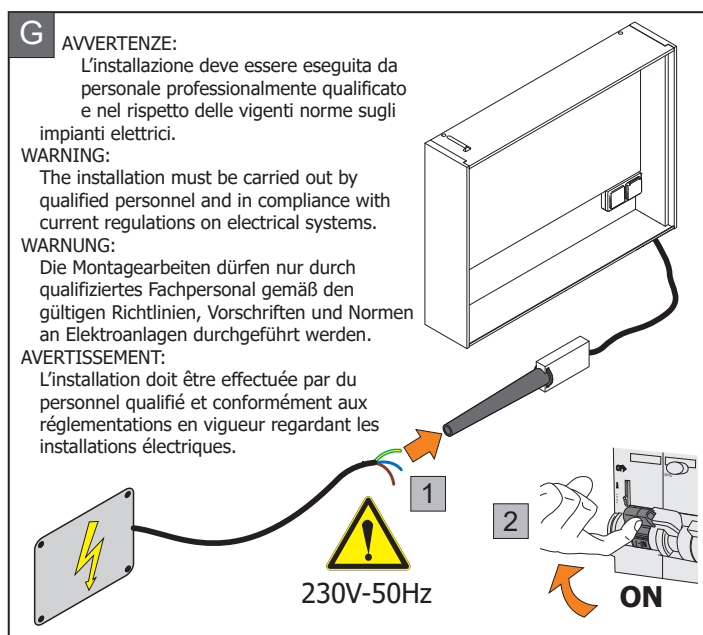




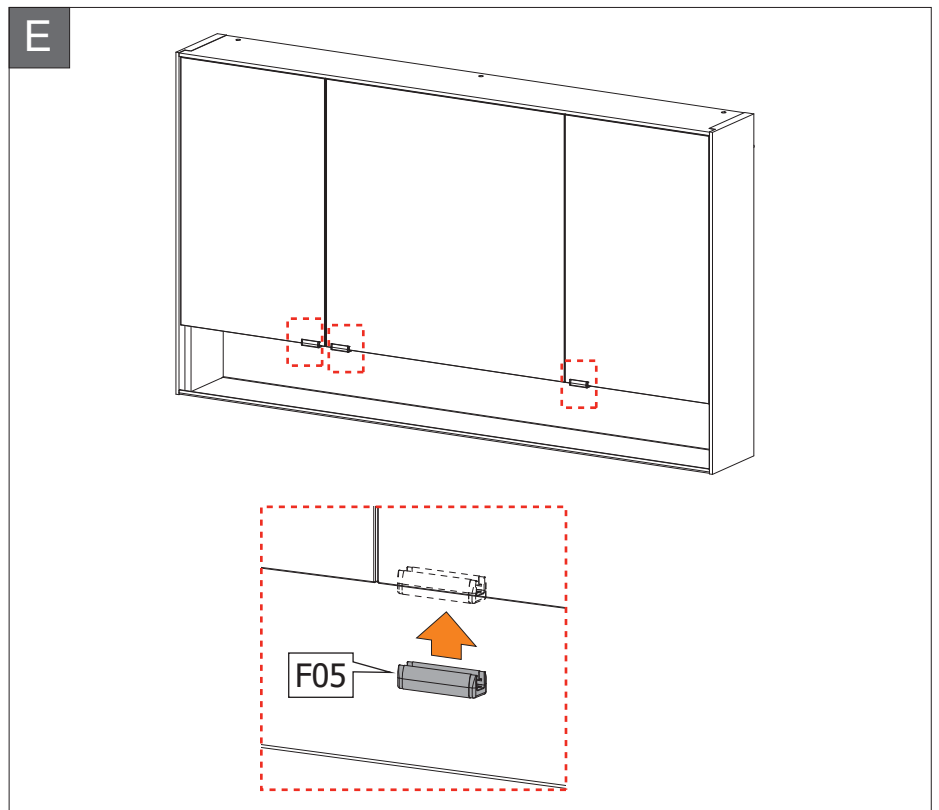
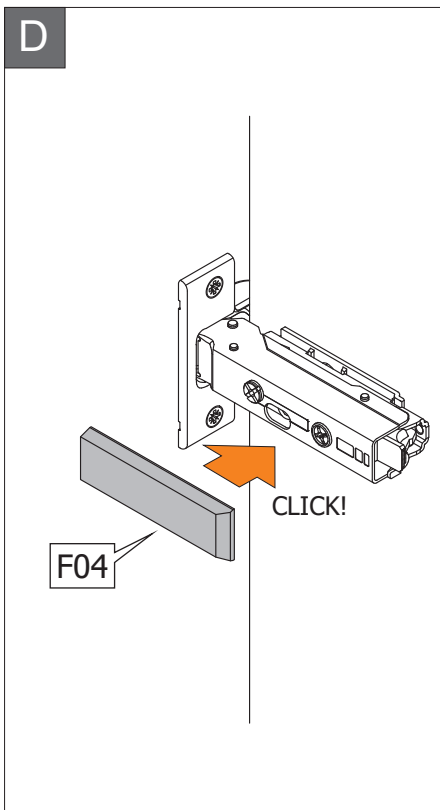
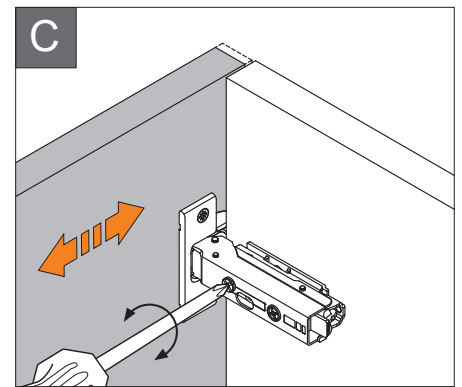
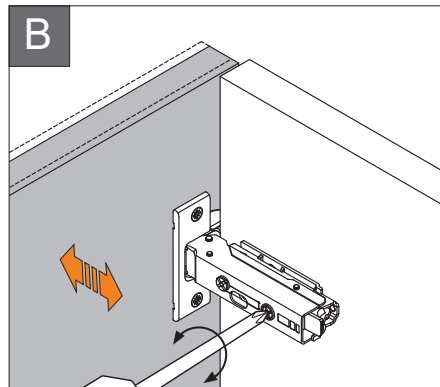
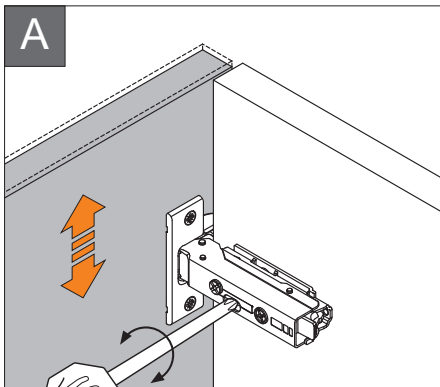
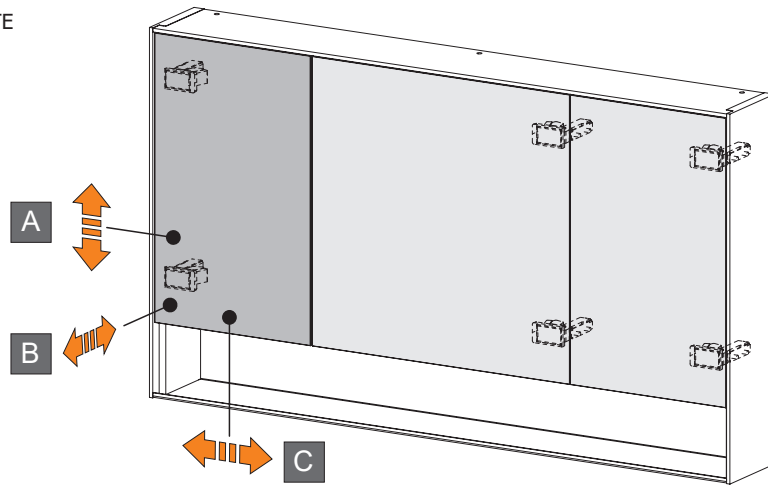
IT Le misure sono espresse in cm. Tra parentesi le quote consigliate
EN All measurements are in centimetres. In brackets the suggested measures.
DE Abmessungen in Zentimeters (cm). In Klammern die empfohlene vermessungen.
FR Les mesures sont en cm. Entre parenthèses les cotes conseillées.



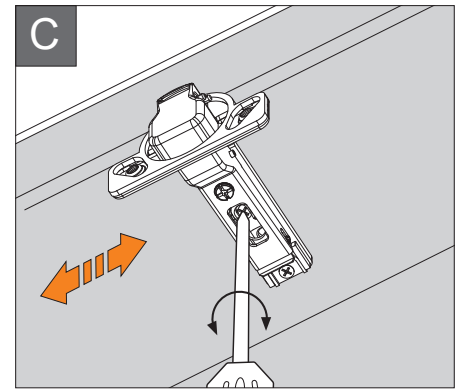
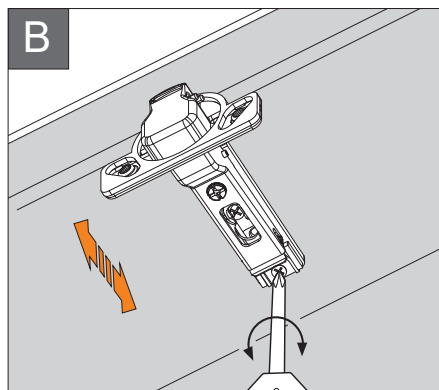
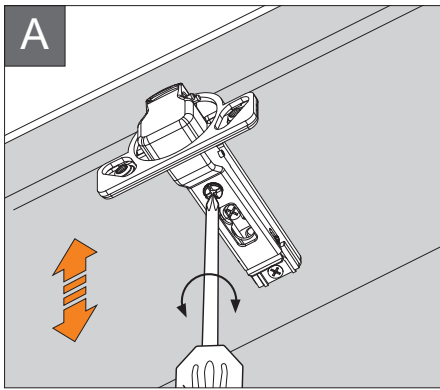
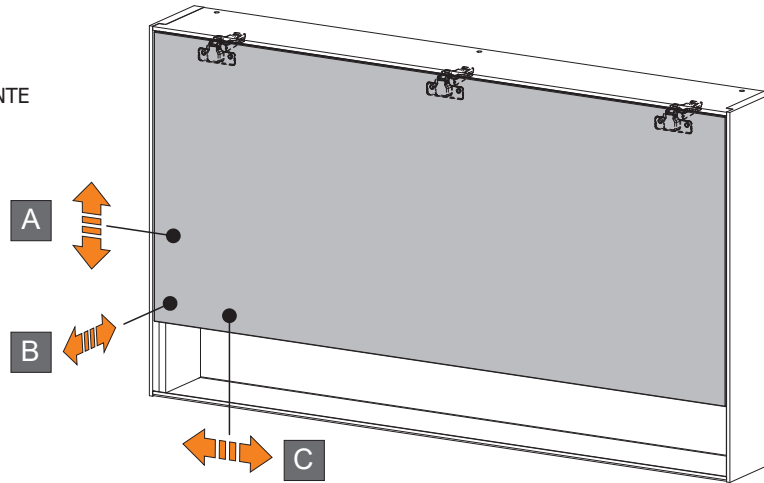
IT Presa ed interruttore opzionale.
EN Opzional socket and switch.
DE Optionale steckdose und schalter.
FR Prise et interrupteur ev option.



- IT REGOLAZIONI - ANTA BATTENTE
- EN ADJUSTMENTS - WING DOOR
- DE AUSRICHTUNG - SCHWENKTÜR
- FR REGLAGES - PORTE BATTANTE



- IT REGOLAZIONI - ANTA RIBALTA
- EN ADJUSTMENTS - FLAP DOOR
- DE AUSRICHTUNG - KIPPTÜR
- FR REGLAGES - PORTE ABATTANTE



IT Fine EN End DE Ende FR Fin