

SPECCHIERA TU PER PENSILE



IT INDICE

1. FERRAMENTA	1
2. INSTALLAZIONE	2

GB CONTENTS

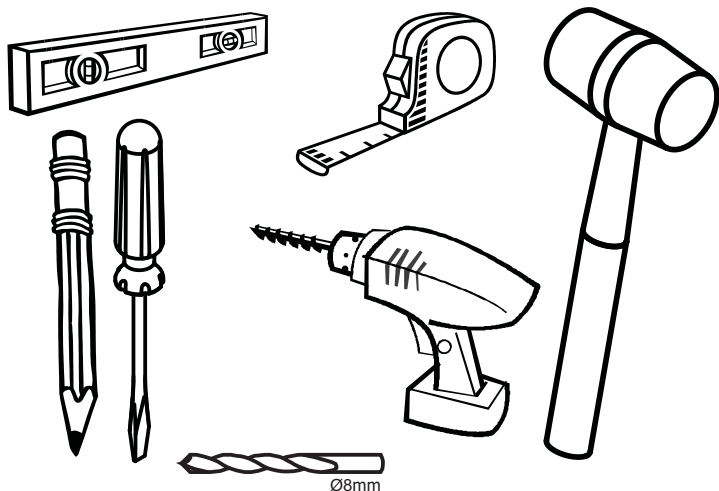
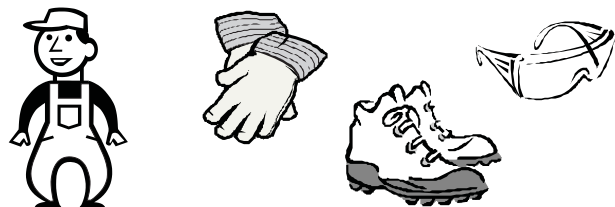
1. HARDWARE KIT	1
2. INSTALLATION	2





D INHALTSVERZEICHNIS

1. EISENWAREN-KIT	1
2. MONTAGE	2

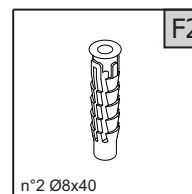
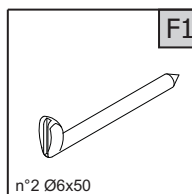
F INDEX

1. QUINCAILLERIE	1
2. INSTALLATION	2



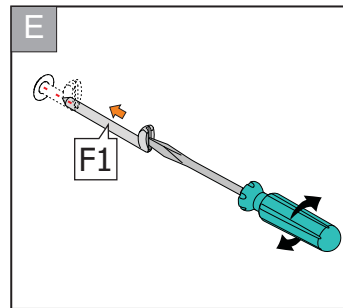
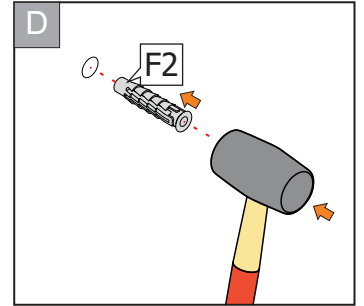
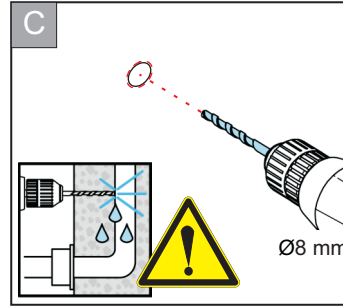
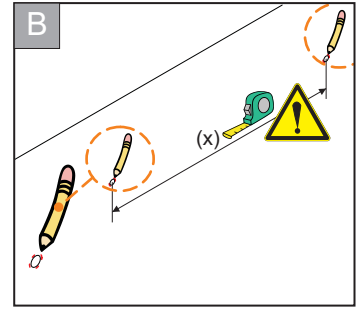
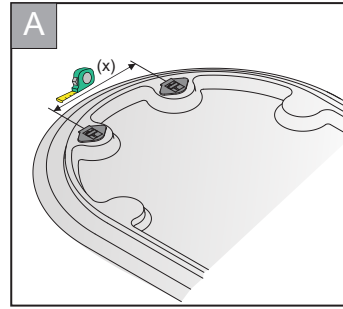
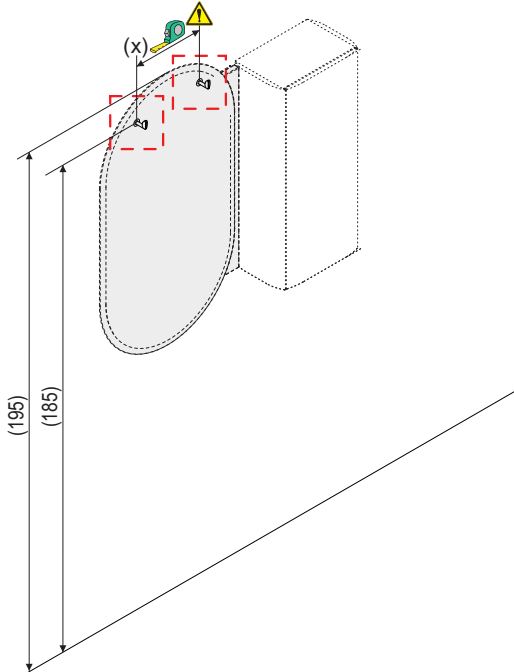
- IT ATTENZIONE:**
 - Verificare la condizione del supporto prima di installare la specchiera e scegliere viti adeguate al supporto esistente. 
- GB ATTENTION:**
 - Check the support condition before proceeding with the installation of the mirror; also choose adequate screw for the existing support. 
- D ACHTUNG:**
 - Vor der installation des spiegels den zustand des halters prüfen; wählen sie angemessene schrauben für bestehenden halter aus. 
- F ATTENZIONE:**
 - Vérifier les conditions du support avant d'installer le miroir et choisir les vis adéquates au support existant. 

- IT FERRAMENTA** **GB HARDWARE KIT**
D EISENWAREN-KIT **F QUINCAILLERIE**

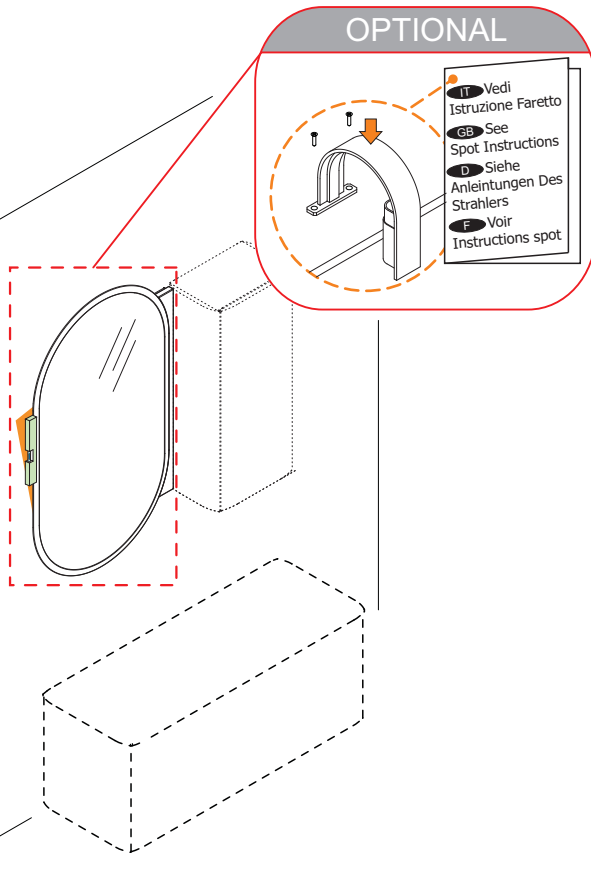


01

- IT Le misure sono espresse in cm. Tra parentesi le quote consigliate
- GB All measurements are in centimetres. In brackets the suggested measures.
- D Abmessungen in Zentimeters (cm). In Klammern die empfohlene Vermessungen.
- F Les mesures sont en cm. Entre parenthèses les cotes conseillées.

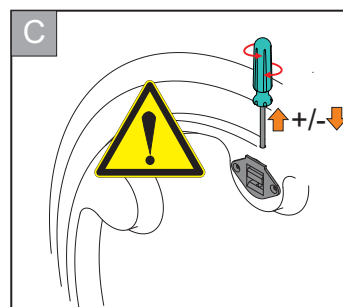
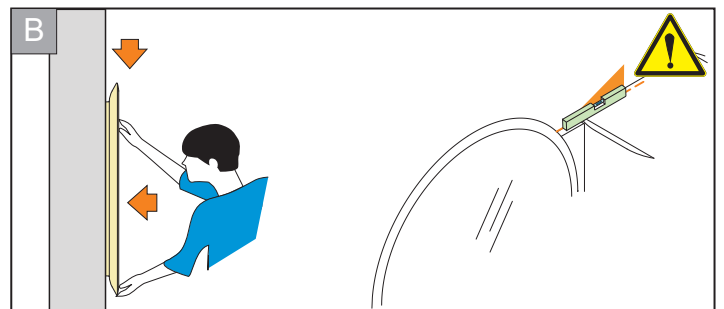
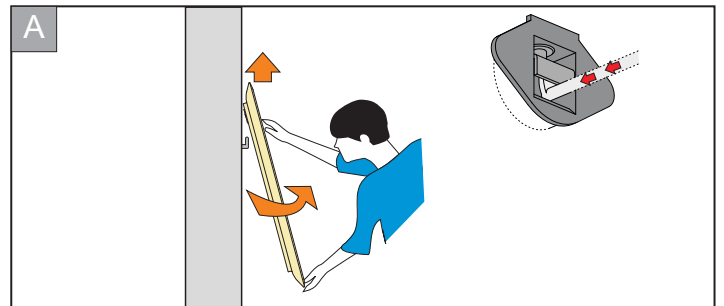


02



OPTIONAL

- IT Vedi Istruzione Faretto
- GB See Spot Instructions
- D Siehe Anleitungen Des Strahlers
- F Voir Instructions spot



IT Fine GB End D Ende F Fin